

How to Properly Measure for a Replacement Sight-Glass

- 1. Measure the OD (outside diameter) and ID (inside diameter) of the old sight-glass. Even if the glass is broken, you can usually get a good measurement. There are only two nominal diameters that we carry, 7/8"OD-5/8"ID, and 3/4"OD-1/2"ID.*
- 2. Measure the length of the old sight-glass to the 1/16th" This may not be possible as the glass is most likely broken. If this is your situation, follow the photo-instructions below to determine the proper sight-glass length for your test measure or prover.*

Does not apply for LPG provers, or flat sight-glass test measures

UPPER SIGHTGLASS
BRACKET



LOWER SIGHTGLASS
BRACKET

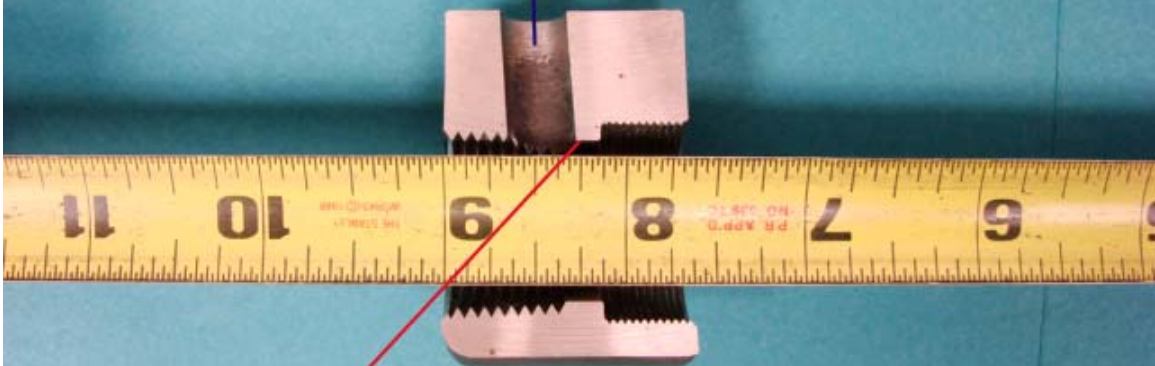
INSERT TAPE MEASURE THRU
UPPER SIGHTGLASS BRACKET, UNTIL
IT BOTTOMS ON THE LOWER BRACKET



BE SURE THAT TAPE MEASURE
IS AT THE BOTTOM OF THE STEP
IN THE LOWER BRACKET



VENT PORT



WHERE THE TAPE MEASURE INTERSECTS
THE BOTTOM EDGE OF THE VENT PORT,
THIS IS THE REQUIRED SIGHTGLASS
LENGTH. IN THIS CASE, 8-1/4"