

How to Replace a Gauge Glass

Tools Required: 1" open end wrench or adjustable wrench and a flat blade screw driver

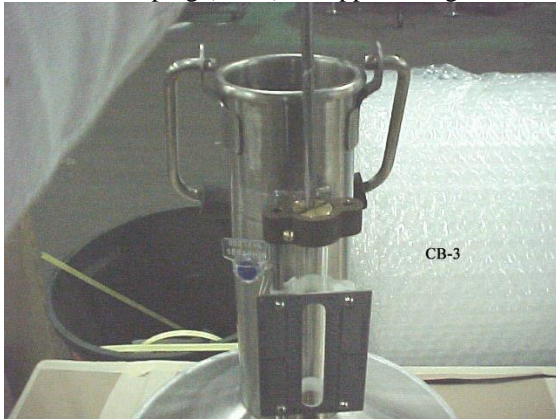
Installation: (see Photo's below CB-1 to CB-9)

1. Unscrew and remove non adjusting stainless steel guide rod (CB-1).

Note: Do not remove brass locking rivet or seal (CB-2) at any time or else recalibration is required.



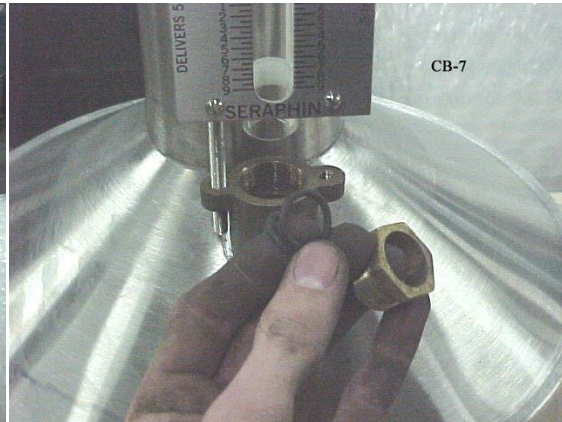
2. Remove brass plug (CB-3) for upper fitting with screwdriver (CB-4).



3. Using a 1" open end wrench (CB-5), unscrew the brass compression hex nut at the bottom of the gauge assembly.



- Carefully grasp the gauge glass (CB-6), lift and twist at the same time to remove from the gauge supports. Be sure to find the two "O" rings (CB-7) under the brass compression hex nut, as they do not always come out with the glass (CB-8).



- To re-install reverse the process, carefully putting the "O" rings around the tube where necessary (CB-9). Tighten the compression nut so that you cannot twist the gauge glass in the assembly.

Note: Over tightening the brass compression hex nut may crack the glass.



NOTE: Pictures shown are of a Test Measure. Although parts may vary slightly the same process can be used for Provers of all sizes. For larger Provers the seal must be broken and locking pin must be removed resulting in the need for recalibration.